



GRT8120

Preliminary Product Guide

ANSI B30.5
Imperial 85%

Features

- 120 t (120 USt) capacity
- 11,3 m - 60 m (37.2 ft - 197 ft) seven-section MEGAFORM™ boom
- 10,5 m - 17,6 m (34.5 ft - 57.6 ft) manual or hydraulic bi-fold lattice swingaway extension with offsets up to 45°
- Crane Control System (CCS)
- New wider full vision cab with 20° cab tilt
- MAXbase variable outrigger positioning system

GROVE GRT8120

The GRT8120 was designed after gathering feedback from crane owners and operators to ensure that it is loaded with the features and reliability you demand.

Features

> Unmatched reach with compact carrier

Class-leading lifting performance is enhanced by the 11,3 m to 60 m (37.2 ft to 197 ft) seven-section MEGAFORM™ boom with TWIN-LOCK™ boom pinning system. This amount of main boom length is typically reserved for rough terrain cranes in the 135 t - 150 t (150 USt -165 USt) class, however when combined with a compact carrier with dimensions of cranes in the 70 t- 90 t (80 USt- 100 USt) class, make the GRT8120 a truly versatile crane that should be in every crane owners fleet. Boosting overall reach is the 17,6 m (57.6 ft) manual or hydraulic swingaway jib for a maximum tip height of 80,8 m (265 ft).

> MAXbase variable outrigger positioning

MAXbase provides increased versatility on the jobsite by allowing asymmetrical outrigger spans. This makes it easier to work in congested jobsites with obstructions, and allows for increased capacities when comparing to the standard 360° load charts.

> New wider full vision cab

The new wider full vision cab was designed with operator comfort, visibility and productivity in mind. Additional width, redesigned armrests and 20° cab tilt maximize the operator experience. Standard features include tilt/telescoping steering wheel, USB charging port, electronic seat adjustments, high-output heating and air conditioning system, large pivoting cup holder, windshield sun visor, added storage behind the seat, and three camera package. Additional optional equipment includes radio with Bluetooth and heated seat.

> Backing up our promise

Our new GRT line of Rough Terrain cranes have been designed from the ground up to provide class-leading specifications, and have undergone extensive testing to ensure they provide industry-leading quality and reliability. We stand behind our new line of GRT cranes, and we are willing to prove it. With new three, four or five-year extended warranty programs as well as a new two-year standard warranty, our GRT line of cranes are built to be GROVE. REAL. TOUGH.



THE ONLY FIVE-YEAR
WARRANTY PROGRAM
AVAILABLE IN THE INDUSTRY

GRT8120 benefits

- > Class-leading boom length and capacities maximize utilization.
- > Compact dimensions with self-rigging counterweight allow for efficient and easy transportation to the job.
- > Wireless rigging remote enables fast and convenient setup.
- > Flat aluminum decking, additional storage compartments and a full LED lighting package with new side-mounted carrier lights improve access and jobsite set up.
- > MAXbase variable outrigger positioning system - Increased lift capacities and easy access to any jobsite.
- > TWIN-LOCK™ boom pinning system maximizes capacities by reducing weight inside the extended boom.
- > Boom Configurator mode increases efficiency and simplifies telescoping operation.
- > Manual or hydraulic bi-fold swingaway with offset capability to 45° increases ability to reach over obstacles and increases jobsite versatility.
- > Innovative smart-sensing outrigger monitoring system offers reliable accuracy.
- > ECO mode supports intelligent power management and decreased fuel consumption.
- > New wider cab with 20° cab tilt and high-output heating and air conditioning system maximizes operator comfort.
- > Four modes of steering increase jobsite maneuverability and make crane positioning easier.



Manitowoc Crane Care when you need it.

The assurance of the world's most advanced crane service and support to get you back to work fast.



Manitowoc Finance helps you get right to work generating profits for your business.

Financial tools that help you capitalize on opportunity with solutions that fit your needs.

Contents

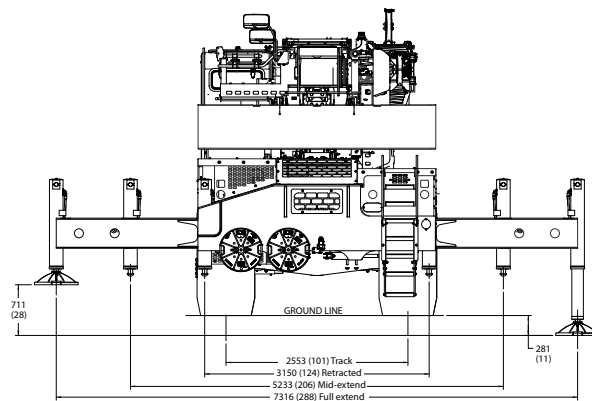
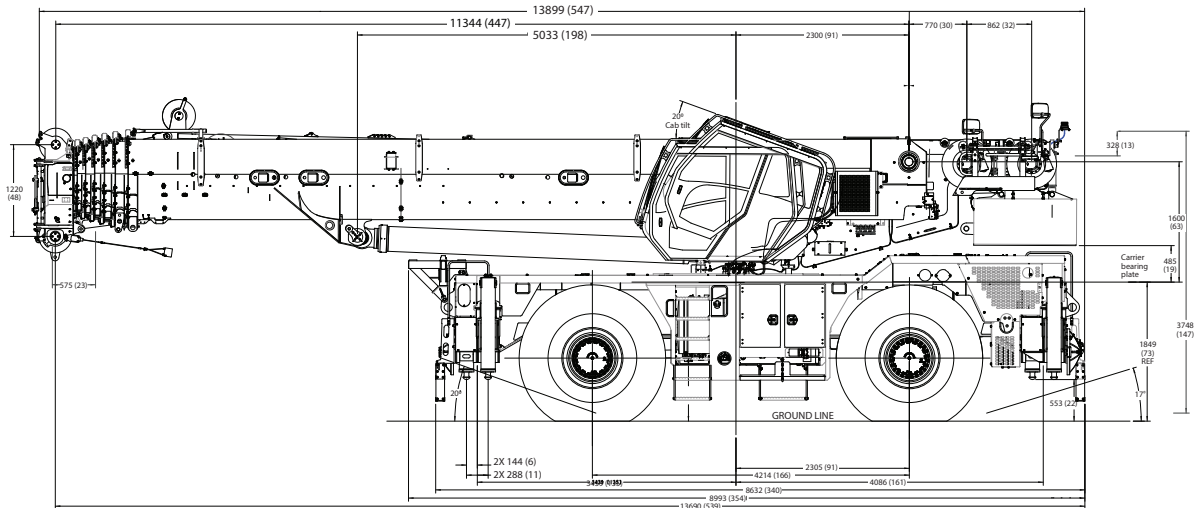
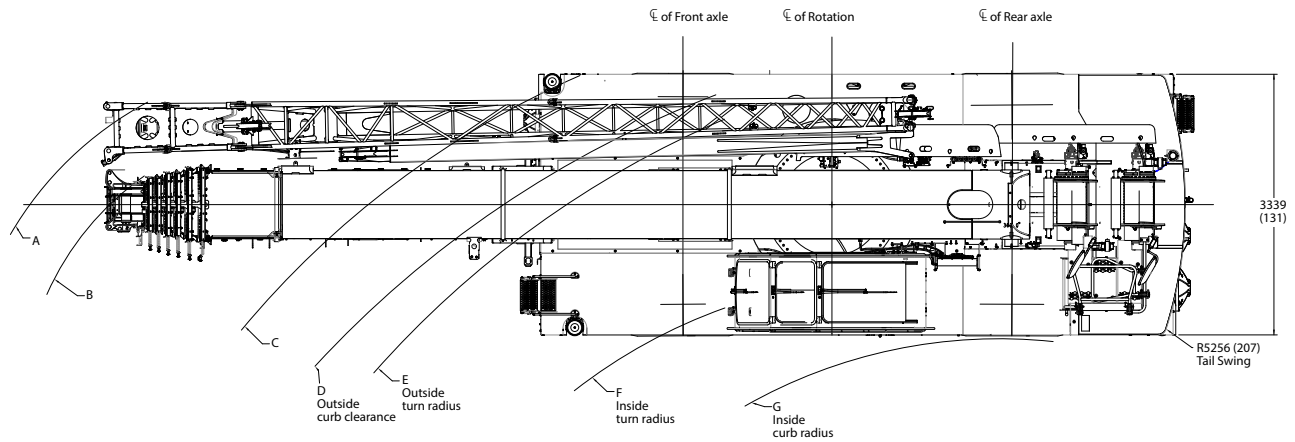
Dimensions	5
Weights	6
Working range with main boom and bi-fold extension	7
Load chart for main boom	8
Load chart for MAXbase 20° over outriggers	9
Load chart for manual bi-fold extension	10
Load handling	12
Specifications.....	13
Symbols glossary	15

Dimensions

Tire size: 29.5 x 25

A	B	C	D	E	F	G	A	B	C	D	E	F	G
17 526 mm (690")	16 713 mm (658")	14 630 mm (576")	13 970 mm (550")	13 564 mm (534")	11 278 mm (444")	9 957 mm (392")	11 938 mm (470")	11 227 mm (442")	8 664 mm (341")	7 798 mm (307")	7 493 mm (295")	4 826 mm (190")	4 521 mm (178")
Two-wheel steer							Four-wheel steer						

Dimensions in mm (in) unless otherwise specified.



Weights

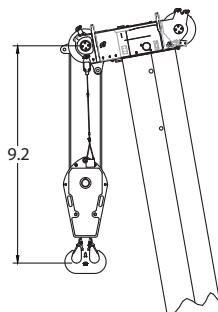
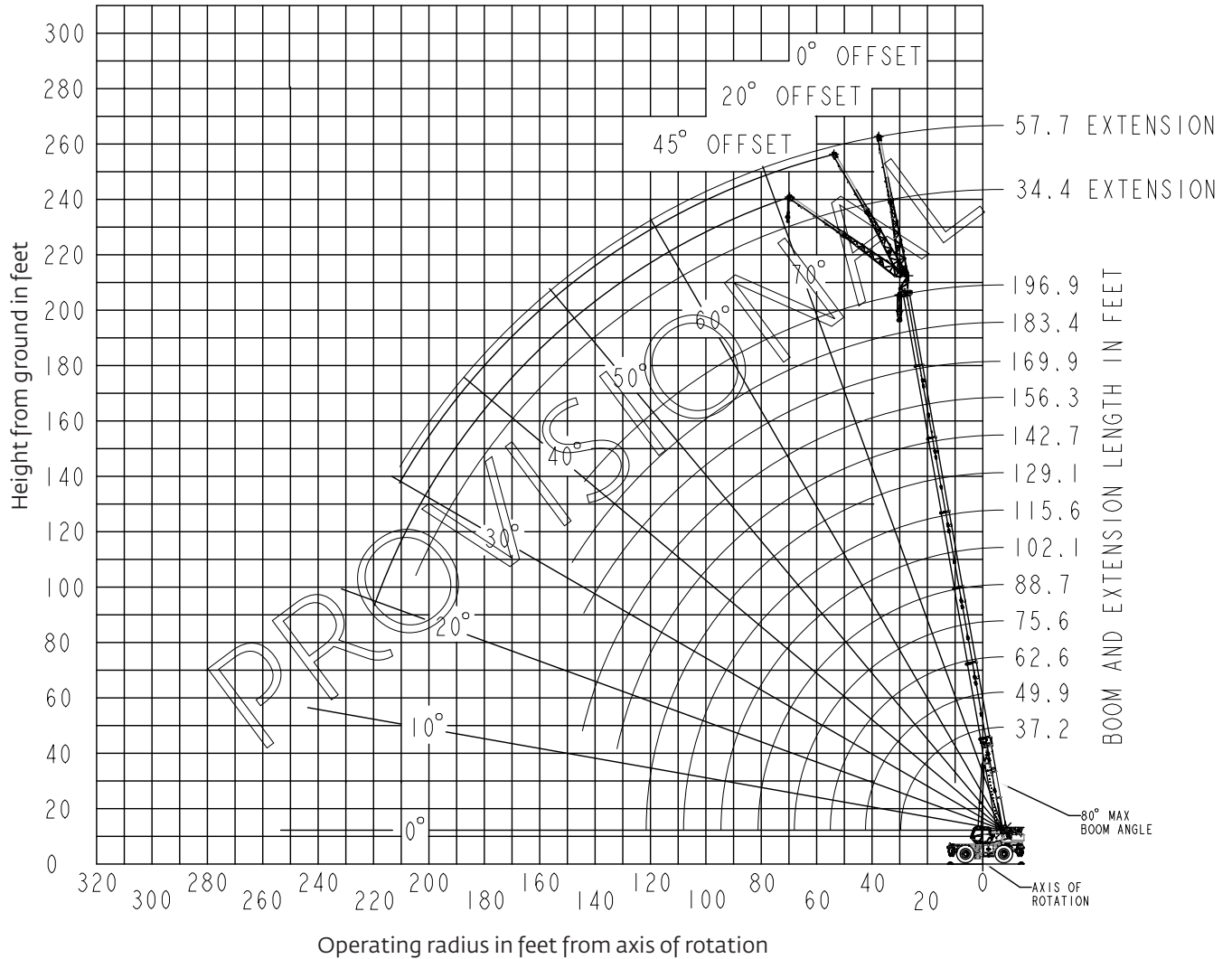
Weights						
	Gross		Axle 1		Axle 2	
	kg	lb	kg	lb	kg	lb
Basic crane with Cummins T4F engine, 60 m (197 ft) main boom, main and auxiliary hoist with wire rope, 17.6 m (57.6 ft) manually offset bi-fold swingaway, 75 t (83 USt) hookblock, 11 t (12 USt) overhaul weight, auxiliary boom nose and 13 245 kg (29,200 lbs) counterweight	58,917	129,889	28,597	63,045	30,320	66,845
Remove 13 245 kg (29,200 lb) counterweight	-13,245	-29,200	4,931	10,871	-18,176	-40,071
crane weight	45,672	100,689	33,528	73,916	12,144	26,774
Remove 17.6 m (57.6 ft) manually offset bi-fold swingaway	-1,450	-3,197	-2,423	-5,342	973	2,145
crane weight	44,222	97,492	31,105	68,574	13,117	28,919
Remove Auxiliary boom nose	-88	-194	-259	-570	171	376
crane weight	44,134	97,298	30,846	68,004	13,288	29,295
Remove 11 t (12 USt) overhaul weight	-294	-648	-471	-1,038	177	390
crane weight	43,840	96,650	30,375	66,966	13,465	29,685
Remove 75 t (83 USt) hookblock	-1,070	-2,359	-1,715	-3,780	645	1,421
crane weight	42,770	94,291	28,661	63,186	14,109	31,106
Basic crane as noted above: Substitute 10.5 m - 17.6 m (34.5 ft - 57.6 ft) hydraulically offset bi-fold swingaway and stowage brackets ILO standard manual bi-fold swingaway	231	509	537	1,183	-306	-674
crane weight	59,148	130,398	29,134	64,228	30,014	66,171

THIS CHART IS ONLY A GUIDE AND SHOULD NOT BE USED TO OPERATE THE CRANE.
The individual crane's load chart, operating instructions and other instructional plates must be read and understood prior to operating the crane

Working range

Working range diagram with bi-fold extension

(Boom deflection not shown)



Dimension shown is for the largest Grove furnished hookblock with anti-two block activated.

*THIS CHART IS ONLY A GUIDE AND SHOULD NOT BE USED TO OPERATE THE CRANE.
The individual crane's load chart, operating instructions and other instructional plates must be read and understood prior to operating the crane*

Load chart

Main boom



37.2 ft - 197 ft



29,200 lb



100%



360°



Pounds

Radius in feet	Main boom length in feet											
	37.2	49.9 - 50.8	60.5 - 64.4	73.6 - 78	84.5 - 91.3	98 - 104.4	109.3 - 117	122.9 - 137.7	147.9 - 154.1	156.3 - 169.9	183.4 - 184.1	194.7 - 196.9
8	240,000*	180,000										
10	176,500	177,500	160,000									
12	158,000	159,000	145,000	125,000								
15	136,000	137,000	129,500	114,000	100,500							
20	105,500	106,500	105,500	95,700	85,750	80,250						
25	80,400	83,150	82,350	81,400	75,600	69,250	65,350					
30		65,100	66,150	65,950	64,800	62,800	58,700	53,500				
35		53,350	53,650	53,500	55,000	54,850	52,950	48,950	36,600			
40		43,750	43,750	45,250	44,650	46,000	44,700	43,550	36,600	29,650		
45			37,200	37,200	37,200	37,800	36,550	35,450	35,950	29,350	21,200	
50			31,050	31,250	32,650	31,900	31,450	29,650	30,200	29,350	21,200	17,900
55			26,250	28,200	27,950	27,200	28,000	26,500	25,550	25,200	21,200	17,900
60				24,350	24,200	24,650	24,250	23,500	21,850	22,100	21,200	17,900
65				21,200	21,150	21,950	21,200	20,450	19,400	19,900	19,550	17,900
70				16,650	19,050	19,400	18,650	17,950	18,150	17,800	17,350	17,150
75					17,500	17,300	16,650	16,000	16,350	16,400	15,350	15,300
80					14,700	15,500	14,850	14,600	15,200	14,850	13,900	13,500
85						13,850	13,250	13,650	13,750	13,250	12,600	11,950
90						12,450	11,850	12,550	12,450	11,900	11,200	10,550
95						9,810	10,600	11,800	11,200	10,650	10,000	9,380
100							9,520	10,700	10,150	10,000	8,950	8,310
105							8,660	9,730	9,190	9,160	8,000	7,360
110								8,850	8,320	8,290	7,140	6,510
115								8,070	7,540	7,510	6,360	5,730
120								7,510	6,820	6,800	5,660	5,030
125								6,330	6,160	6,140	5,020	4,390
130								3,940	5,550	5,530	4,430	3,810
135									5,000	4,970	3,890	3,270
140									4,490	4,470	3,400	2,780
145									4,030	4,000	2,930	2,330
150										3,090	2,490	1,900
155										2,700	2,090	1,500
160										2,330	1,710	1,120
165											1,370	
170											1,050	

*Requires special equipment

THIS CHART IS ONLY A GUIDE AND SHOULD NOT BE USED TO OPERATE THE CRANE.

The individual crane's load chart, operating instructions and other instructional plates must be read and understood prior to operating the crane

Load chart

Main boom - MAXbase 20° over outriggers



37.2 ft - 197 ft



29,200 lb



100%



MAXbase



Pounds

Radius in feet	Main boom length in feet											
	37.2	49.9 - 50.8	60.5 - 64.4	73.6 - 78	84.5 - 91.3	98 - 104.4	109.3 - 117	122.9 - 137.7	147.9 - 154.1	156.3 - 169.9	183.4 - 184.1	194.7 - 196.9
8	180,000											
10	176,500	177,500	160,000									
12	158,000	159,000	145,000	125,000								
15	136,000	137,000	129,500	114,000	100,500							
20	105,000	105,500	105,000	95,700	85,750	80,250						
25	80,950	83,550	82,600	81,400	75,600	69,250	65,350					
30		65,500	66,450	66,100	64,900	62,800	58,700	53,500				
35		53,350	53,950	53,750	55,150	54,850	52,950	48,950	36,600			
40		44,550	44,800	45,250	46,150	47,400	46,250	43,850	36,600	29,350		
45			39,200	39,550	39,150	40,550	39,400	38,450	35,800	29,350	21,200	
50			33,650	34,050	33,750	35,050	34,050	33,100	32,750	29,200	21,200	17,900
55			29,200	29,600	30,900	30,600	29,600	28,750	29,250	27,250	21,200	17,900
60				26,000	27,450	26,900	27,300	25,150	25,700	25,150	21,200	17,450
65				24,100	24,350	23,850	24,750	22,200	22,700	22,150	20,850	16,650
70				18,350	21,750	21,650	22,100	20,450	20,150	19,750	19,650	15,900
75					19,450	20,400	19,850	18,900	17,900	18,050	18,550	15,150
80					17,500	18,450	17,900	17,300	16,000	17,000	16,800	14,400
85						16,750	16,150	15,600	15,050	15,300	15,100	13,550
90						15,200	14,650	14,050	14,150	13,750	13,600	12,700
95						12,400	13,250	12,700	13,150	12,400	12,250	11,900
100							12,050	11,450	11,950	11,250	11,000	11,100
105							10,950	10,800	10,950	10,500	9,950	10,100
110								10,250	10,300	9,800	8,970	9,120
115								9,740	9,720	9,150	8,360	8,200
120								8,970	8,890	8,450	7,800	7,360
125								8,210	8,330	7,840	7,250	6,600
130								4,900	7,630	7,140	6,550	5,910
135									6,980	6,490	5,910	5,280
140									6,380	6,080	5,310	4,690
145									5,820	5,730	4,750	4,150
150										4,810	4,230	3,630
155										4,320	3,740	3,140
160										3,530	3,280	2,690
165											2,860	2,260
170											2,450	1,860
175											2,070	1,480
180												1,120

THIS CHART IS ONLY A GUIDE AND SHOULD NOT BE USED TO OPERATE THE CRANE.

The individual crane's load chart, operating instructions and other instructional plates must be read and understood prior to operating the crane

Load chart

Manual bi-fold extension



37.2 ft - 197 ft



35 ft



29,200 lb



100%



360°



Pounds

Radius in feet	35 ft boom extension								
	167.7 - 169.9 ft boom length			183.4 - 184.1 ft boom length			194.7 - 196.9 ft boom length		
	0° offset	20° offset	45° offset	0° offset	20° offset	45° offset	0° offset	20° offset	45° offset
40	12,500								
45	12,500			11,300					
50	12,500			11,300			9,780		
55	12,500	13,050		11,300			9,780		
60	12,500	13,050		11,300	11,700		9,780		
65	12,500	13,050	11,350	11,300	11,700		9,780	10,050	
70	12,500	13,050	11,150	11,300	11,700	11,300	9,780	10,050	
75	12,500	12,300	10,950	11,300	11,700	11,100	9,780	10,050	10,550
80	11,650	11,600	10,750	11,300	11,700	10,900	9,780	10,050	10,550
85	10,800	10,900	10,600	11,050	11,700	10,750	9,780	10,050	10,550
90	10,050	10,200	10,400	10,300	10,700	10,600	9,730	10,050	10,550
95	9,380	9,530	9,800	9,210	9,910	10,250	8,550	9,410	10,150
100	8,740	8,900	9,230	8,160	8,900	9,530	7,500	8,300	8,990
105	7,920	8,310	8,620	7,220	7,900	8,470	6,560	7,310	7,940
110	7,070	7,630	8,050	6,370	7,010	7,520	5,720	6,410	6,990
115	6,300	6,820	7,210	5,610	6,200	6,660	4,970	5,610	6,130
120	5,610	6,090	6,430	4,920	5,460	5,880	4,280	4,880	5,350
125	4,970	5,410	5,710	4,290	4,790	5,170	3,650	4,210	4,630
130	4,390	4,800	5,060	3,710	4,180	4,510	3,080	3,600	3,980
135	3,860	4,230	4,450	3,190	3,620	3,910	2,550	3,040	3,380
140	3,370	3,710	3,890	2,700	3,100	3,350	2,070	2,520	2,820
145	2,920	3,230		2,250	2,620	2,840	1,620	2,040	2,310
150	2,510	2,780		1,840	2,170	2,360	1,210	1,590	1,830
155	2,120	2,370		1,450	1,760			1,180	1,380
160	1,760	1,980		1,090	1,370				
165	1,430	1,620			1,010				
170	1,120	1,280							

THIS CHART IS ONLY A GUIDE AND SHOULD NOT BE USED TO OPERATE THE CRANE.

The individual crane's load chart, operating instructions and other instructional plates must be read and understood prior to operating the crane

Load chart

Manual bi-fold extension



37.2 ft - 197 ft



58 ft



29,200 lb



100%



360°



Pounds

Radius in feet	58 ft boom extension								
	167.7 - 169.9 ft boom length			183.4 - 184.1 ft boom length			194.7 - 196.9 ft boom length		
	0° offset	20° offset	45° offset	0° offset	20° offset	45° offset	0° offset	20° offset	45° offset
45	7,590								
50	7,590			7,110					
55	7,590			7,110			6,280		
60	7,590			7,110			6,280		
65	7,590			7,110			6,280		
70	7,590	7,290		7,110			6,280		
75	7,590	7,130		7,110	7,200		6,280		
80	7,590	6,980	5,680	7,110	7,060		6,280	6,990	
85	7,590	6,830	5,620	7,110	6,920	5,650	6,280	6,860	
90	7,590	6,700	5,560	7,110	6,790	5,590	6,280	6,740	
95	7,590	6,560	5,500	7,110	6,660	5,530	6,280	6,620	5,530
100	7,590	6,440	5,440	7,110	6,540	5,480	6,280	6,510	5,480
105	7,590	6,320	5,390	7,110	6,420	5,430	6,280	6,410	5,430
110	7,180	6,210	5,340	6,780	6,310	5,380	6,140	6,300	5,390
115	6,710	6,100	5,290	6,010	6,210	5,330	5,380	6,200	5,340
120	6,000	6,000	5,260	5,310	6,070	5,290	4,680	5,800	5,300
125	5,360	5,900	5,220	4,680	5,640	5,260	4,050	5,100	5,270
130	4,780	5,580	5,200	4,090	5,000	5,230	3,470	4,450	5,230
135	4,240	4,990	5,150	3,560	4,400	5,130	2,930	3,860	4,670
140	3,740	4,440	5,000	3,060	3,860	4,520	2,440	3,320	4,060
145	3,280	3,930	4,430	2,610	3,350	3,950	1,990	2,810	3,490
150	2,860	3,460	3,900	2,190	2,880	3,420	1,570	2,340	2,960
155	2,470	3,030	3,410	1,800	2,440	2,930	1,180	1,900	2,470
160	2,100	2,620	2,940	1,430	2,040	2,470		1,500	2,010
165	1,760	2,230	2,510	1,090	1,650	2,040		1,110	1,570
170	1,440	1,870			1,300	1,630			1,170
175	1,150	1,540				1,240			
180		1,220							

THIS CHART IS ONLY A GUIDE AND SHOULD NOT BE USED TO OPERATE THE CRANE.

The individual crane's load chart, operating instructions and other instructional plates must be read and understood prior to operating the crane

Load handling

Weight reductions for load handling devices	
Auxiliary boom nose	88 kg (194 lb)
Hook blocks and overhaul weights:	
100 t (112 USt), 7-sheave	1140 kg (2513 lb)+
75 t (83 USt), 5-sheave	1070 kg (2359 lb)+
45 t (50 USt), 3-sheave	770 kg (1698 lb)+
26 t (29 USt), single sheave	535 kg (1179 lb)+
11 t (12 USt), overhaul weight	294 kg (648 lb)+
9 t (10 USt), overhaul ball	330 kg (727 lb)+

*Refer to rating plate for actual weight.

Line pulls and reeving information			
Hoists	Cable specs.	Permissible line pulls	Nominal cable length
Main	19 mm (3/4 in) 35x7 Class rotation resistant (non-rotating) Min. breaking strength 38 918 kg (85,800 lb)	7784 kg (17,160 lb)*	250 m (820 ft)
Auxiliary	19 mm (3/4 in) 35x7 Class rotation resistant (non-rotating) Min. breaking strength 38 918 kg (85,800 lb)	7784 kg (17,160 lb)*	185 m (607 ft)

The approximate weight of 19 mm (3/4 in) wire rope is 2.2 kg/m (1.5 lb/ft).

*With certain boom and hoist tackle combinations, the allowable line pull may be limited by hoist performance. Refer to Hoist performance table for lift planning to ensure adequate hoist performance on drum rope layer required.

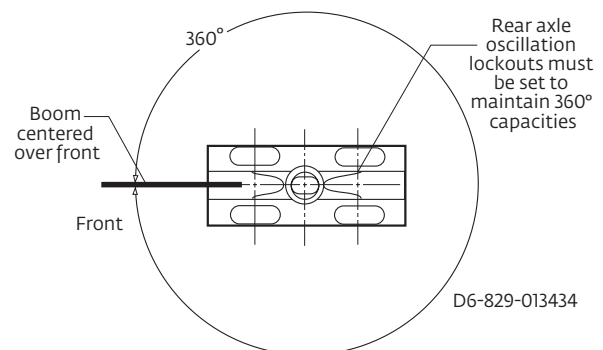
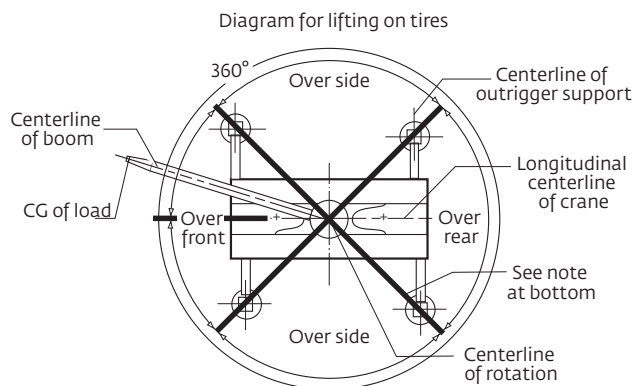
Hoist performance				
Wire rope layer	Hoist line pulls		Drum capacity (ft)	
	Two speed hoist		Layer	Total
	Low	High		
	Available lb	Available lb		
1	23,468	12,957	108.7	108.7
2	21,553	11,900	118.4	227.1
3	19,927	11,003	128.1	355.2
4	18,530	10,231	137.7	492.9
5	17,315	9560	147.4	640.3
6	16,250	8972	157.1	797.4

*Refer to Line Pulls and Reeving Information table for max. lifting capacity of wire rope.

Synthetic rope layer height may vary and may reduce available line pull per layer.

Tire inflation		
Size (front and rear)	TRA Code	Lifting service, general travel and extended travel
		Static, creep and 2.5 mph (4.0 km/h)
29.5 x 25 - 34 PR	E-3	5.2 bar (76 psi)

Working area diagram



Bold lines determine the limiting position of any load for operation within working areas indicated.

THIS CHART IS ONLY A GUIDE AND SHOULD NOT BE USED TO OPERATE THE CRANE.

The individual crane's load chart, operating instructions and other instructional plates must be read and understood prior to operating the crane

Specifications

Superstructure

Boom

BOOM: 11,3 m - 60 m (37.2 ft - 197 ft) seven-section MEGAFORM™ boom with TWIN-LOCK™ boom pinning system.
Maximum tip height: 63.1 m (207 ft)

Boom nose

Five nylon sheaves mounted on heavy-duty tapered roller bearings with removable pin type guards. Quick reeve boom nose. Removable single sheave auxiliary boom nose with removable pin-type rope guard.

Boom elevation

Single hydraulic cylinder with integral holding valve provides boom elevation from -3° to +80°.

Manual bi-fold swingaway extension*

10,5 m - 17,6 m (34.5 ft - 57.6 ft) bi-fold lattice swingaway extension. Offsets at 0°, 20° and 45°. Stows alongside base boom section. Includes wireless rigging remote.
Maximum tip height: 80.8 m (265 ft)

Hydraulic bi-fold swingaway extension*

10,5 m - 17,6 m (34.5 ft - 57.6 ft) bi-fold lattice swingaway extension. Hydraulically offsets from 0° to 45°. Controlled from crane cab. Stows alongside base boom section. Includes wireless rigging remote.
Maximum tip height: 80.8 m (265 ft)

Crane Control System (CCS)

Rated Capacity Limiter (RCL) with graphical display. Load moment and anti-two block system with audio-visual warning and control lever lockout. This system provides electronic display of boom angle, boom length, load radius, boom tip height, maximum permissible load, actual load and warning of impending two-block condition. Also includes an Operating display which shows the crane operating indicators, levels, warnings and faults. Other features include a Working Range Limiter (WRL) which allows the operator to preselect and define working areas. If the crane approaches the operator preset limits, audio-visual warnings aid the operator in avoiding obstructions. ECO mode system to control engine rpm to lower noise and improve fuel consumption. Operator-programmable function speeds and ramps.

Cab

Operator-controlled 20° hydraulic cab tilt, full vision, all steel fabricated with acoustical lining and tinted safety glass throughout. Deluxe seat with headrest, incorporates armrest-mounted electronic programmable single-axis or dual-axis controllers and a jog dial for easy data input. Tilt/telescoping steering wheel with controls incorporated into the steering column. Other standard features include heater (hot water), circulating air fan, high-output air conditioning system, sliding skylight with sunscreen, windshield and skylight washer/wiper, windshield sun visor, fire extinguisher, seat belt, USB charging port, pivoting cup holder, and dual cab-mounted work lights.

Swing

Variable speed, 360° continuous rotation. Planetary swing drive with foot actuated multi-disc brake. Spring-applied, hydraulically released swing brake. Two-position mechanical swing lock pin, operated from cab.
Maximum speed: 2 rpm

Counterweight

13 245 kg (29,200 lb) hydraulically installed and removed. Controlled via CCS operating display in cab or via wireless rigging remote.

Hoist (main and optional auxiliary hoist)

Planetary reduction driven by axial piston motor. Grooved drum with automatic spring applied multi-disc wet brake. Electronic hoist drum rotation indicator. Third wrap indicator with hoist function cut-out standard.

Maximum hoist single line pull:

1st layer: 10 645 kg (23,468 lb)

3rd layer: 9039 kg (19,927 lb)

6th layer: 7371 kg (16,250 lb)

Maximum permissible single line pull:

7784 kg (17,160 lb)

Maximum hoist single line speed (no load):

148 m/min (487 ft/min)

Rope construction:

35 x 7 rotation – resistant

Rope diameter:

19 mm (3/4 in)

Rope length:

Main hoist: 250 m (820 ft)

Auxiliary hoist: 185 m (607 ft)

Carrier

Chassis

Parallel box section fabricated from high-strength, low-alloy steel with integral outrigger boxes, front and rear lift, tie-down, and towing lugs.

Outrigger system

Four hydraulic telescoping single stage double box beam outriggers with inverted jack cylinders and integral jack holding valves. Three position settings, 0%, 50%, and fully extended. Polymer outrigger floats 600 mm (23.6 in) diameter. Outrigger Monitoring System (OMS) with in-cylinder sensors. Outrigger beam position shown on RCL display.

Outrigger controls

Main controls and digital level shown on operating display in cab. Extension and retraction are through the CCS system as well as the wireless rigging remote. Includes automatic leveling feature.

* Denotes optional equipment

Specifications

Carrier *cont'd*



Hydraulic system

Two main pumps variable displacement piston and one gear with a combined output capacity of 507 L/min (134 gal/min).
Maximum operating pressure: 276 bar (4000 psi)
Return line in-tank filter with full flow by-pass protection and service indicator.
Replaceable cartridge with 4 micron filtration rating per ISO cleanliness level of 17/15/12. Carrier mounted oil cooler with thermostatically controlled hydraulic motor driven fan / air to oil. System pressure test ports.



Engine (Tier 4F)

Cummins QSB6, 7L diesel six cylinder, turbo-charged with Cummins Compact Catalyst (CCC) and selective catalytic reduction (SCR) combo muffler, using diesel exhaust fluid (DEF) injection. Meets emissions per U.S. EPA Tier 4F and E.U. Stage IV.
275 hp (205 kW) at 2500 rpm, Maximum torque: 730 lb/ft (990 Nm) at 1500 rpm. Fuel requirements: Maximum of 15 ppm ultra-low sulfur diesel fuel + diesel exhaust fluid (DEF).



Engine (Tier 3)

Cummins QSB6, 7L diesel six cylinder, turbo-charged with 275 hp (205 kW) at 2500 rpm, Maximum torque: 730 lb/ft (990 Nm) at 1500 rpm. Fuel requirements: Maximum of 5000 ppm. Sulfur diesel fuel.



Fuel tank capacity

312 L (82 gal)



Transmission

Rangeshift with six forward and six reverse speeds.
(Three speeds high and three speeds low). Front axle disconnect for 4 x 2 drive.



Axles

FRONT: Drive / steer with differential and planetary reduction hubs rigid mounted to frame.
REAR: Drive / steer with differential and planetary reduction hubs pivot mounted to frame. Automatic full hydraulic lockouts on rear axle permits 254 mm (10 in) of oscillation only with boom centered over the front.



Brakes

Full hydraulic split (dual) circuit dry disc operating on all wheels with dual calipers. High pressure parking brake is spring applied / hydraulically released on the front axle input shaft.



Steering

Fully independent power steering.
Front: Fully hydraulic steering wheel controlled.
Rear: Fully hydraulic via separate momentary switch provides infinite variations 4 steering modes, front only, rear only, coordinated and crab.
Rear steer not aligned indicator.
Outside 4WS coordinated steer radius: 7,5 m (24.6 ft)
Inside 4WS coordinated steer radius: 4,8 m (15.8 ft)



Tires

29.5 x 25 – 34 bias ply rating



Electrical system

Two 12 V maintenance-free batteries with disconnect.
24 V system / 24 V lighting



Lighting

Full LED lighting package including turn indicators; head, tail, brake and hazard warning lights; carrier side mounted work lights and work lights mounted on cab front.



Maximum Drive Speed

24,1 km/h (15 mph) with counterweight installed.



Gradeability (theoretical)

70% to drive train stall based on 58 917 kg (129,889 lb) GVW with 29.5 x 25 tires, standard counterweight, auxiliary hoist and manual bi-fold extension.

Miscellaneous standard equipment

Full length aluminum decking, dual rear view mirrors, hook block tie-down, electronic back-up alarm, covered deck storage compartment, hot water cab heater / defroster, cab air conditioner, hoist mirrors, hourmeter, A/V warning system, combination lift/tie-down/towing lugs, coolant sight level indicator, hoist access platform, storage boxes on both sides of carrier and cribbing storage on left side of carrier.

*Optional equipment

- Auxiliary Hoist Package: Includes auxiliary hoist with electronic hoist drum rotation indicator, hoist drum cable follower, third wrap indicator with hoist function cut-out, 185 m (607 ft) of 19 mm (¾ in.) of 35 x 7 class rotation resistant wire rope.
- Auxiliary Lighting and Convenience Package: Includes superstructure mounted amber flashing beacon, dual base boom mounted LED work lights controlled from cab and in-cab RCL light bar.
- 10,5 m - 17,6 m (34.5 ft - 57.6 ft) manual bi-fold swingaway extension
- 10,5 m - 17,6 m (34.5 ft - 57.6 ft) hydraulic luffing extension
- 360° NYC style mechanical swing lock
- Rear pintle hitch
- Cab-controlled cross axle differential locks (front and rear)
- Wind speed indicator
- Vertical RCL light tower
- -29C / -20F cold weather package
- -40C / -40F arctic weather package
- Emergency stop buttons on each side of carrier
- Second beacon light
- Refinery package (certified spark arrestor + engine air shutdown) (T3 engine only)
- MAXbase - variable outrigger positioning system
- Three camera package (rear-view, right side and hoists)
- Bluetooth/AM/FM radio
- Heated seat
- CraneSTAR asset management system

* Denotes optional equipment

Symbols glossary



Axles



Counterweight



Hydraulic system



Speed



Boom



Crane control system



Insert



Steering



Boom elevation



Electrical system



Lights



Suspension



Boom extension



Engine



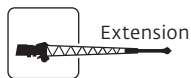
MAXbase



Swing



Boom nose



Extension



Outrigger controls



Tires



Brakes



Fuel tank capacity



Outriggers



Transmission



Cab



Grade



Radius



Chassis



Hoist



Rotation

Manitowoc Cranes

Regional headquarters

Americas

Milwaukee, Wisconsin, USA

Tel: +1 414 760 4600

Shady Grove, Pennsylvania, USA

Tel: +1 717 597 8121

Europe and Africa

Dardilly, France - TOWERS

Tel: +33 (0) 4 72 18 20 20

Wilhelmshaven, Germany - MOBILE

Tel: +49 (0) 4421 294 0

APAC

Shanghai, China

Tel: +86 21 6457 0066

Singapore

Tel: +65 6264 1188

Middle East and India

Dubai, UAE

Tel: +971 4 8862677



This document is non-contractual. Constant improvement and engineering progress make it necessary that we reserve the right to make specification, equipment, and price changes without notice. Illustrations shown may include optional equipment and accessories and may not include all standard equipment.